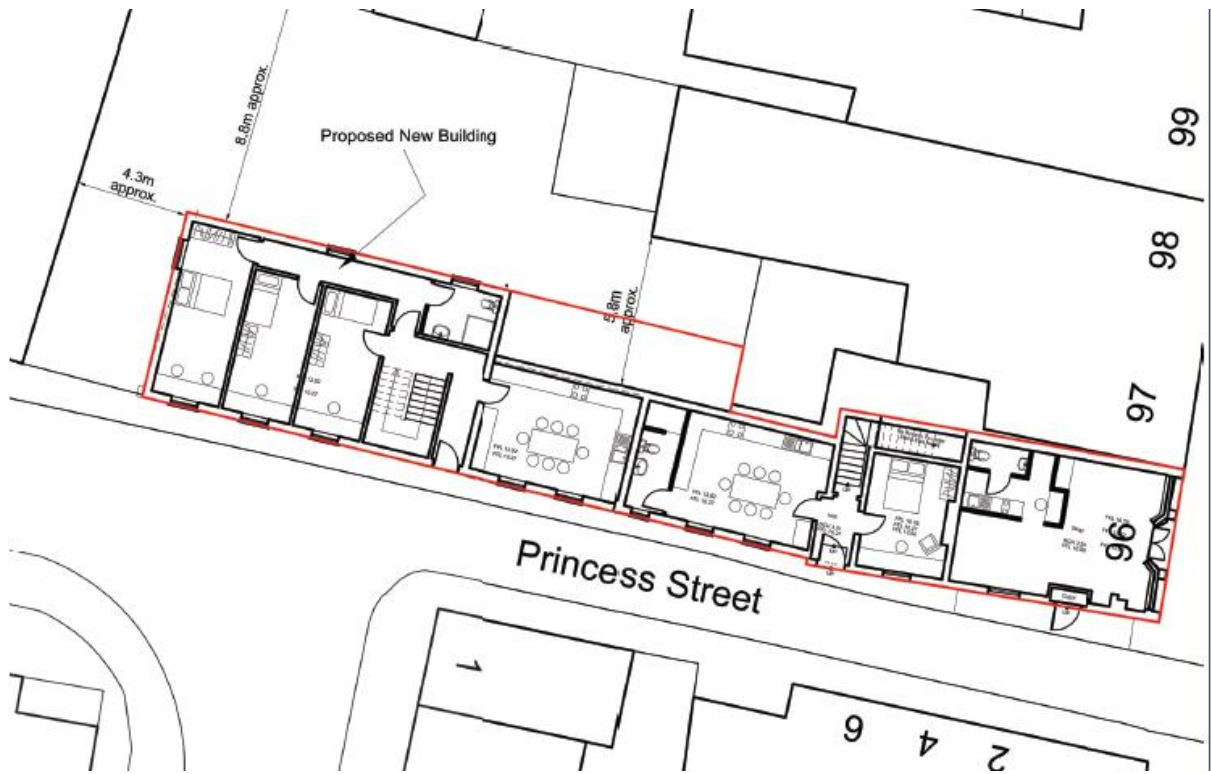


96 High Street- Plans and Photographs



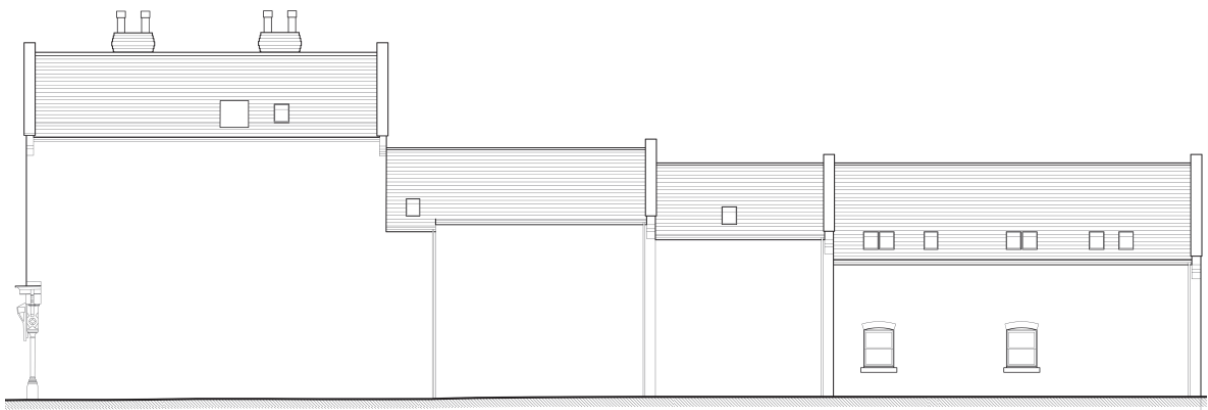
Site location plan



Previously approved site layout- same footprint as currently proposed



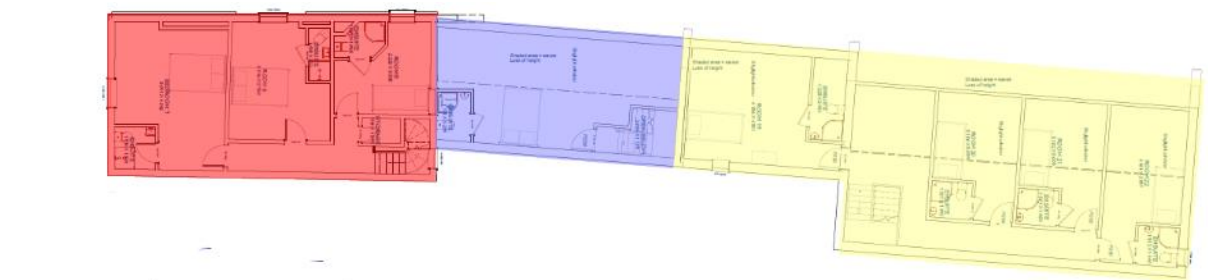
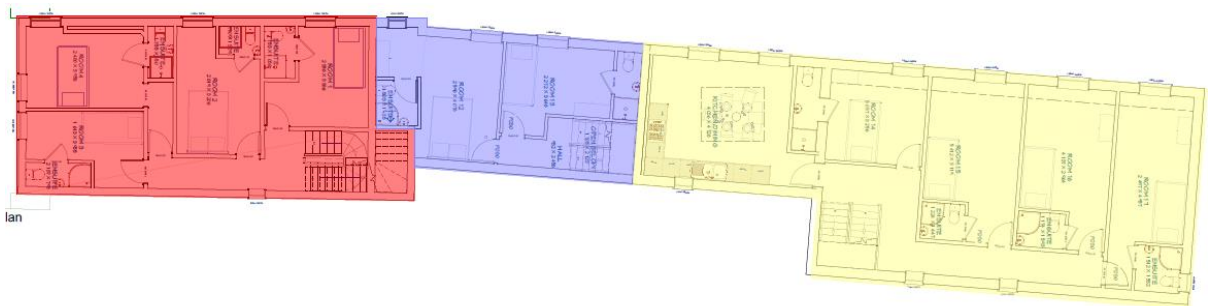
Previously approved south elevation



Previously approved north elevation



Proposed ground floor plan. Retained retail unit to the front with seven bed HMO (red), three bed HMO (blue) and 12 bed HMO (yellow) to the rear



Proposed first and second floor plans



Front elevation to High Street (Google Street View)



Rear elevation and application site from Princess Street



Rear elevation of application property from within the site with High Street properties and 3A-3D Princess Street to the left



Access to site adjacent to side elevation of Princess Street Garage to the left and north boundary with properties on Foster Street and St. Georges Court in the background.



View west towards Princess Street Garage (Google Street View)